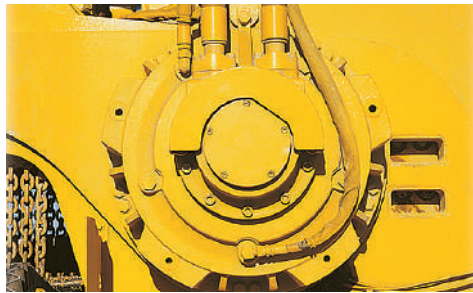


T1055III TRENCHER



SMARTTEC ELECTRONIC CONTROL SYSTEM. SmartTEC performance software helps optimize productivity with real-time machine control prompts. Monitor and record functions encourage proactive machine maintenance and operator performance analysis. Available on all Vermeer TEC® Plus computer-aided control system-equipped machines.



ROTARY POWER TRENCHER DRIVE MOTOR. A rotary power trencher drive motor and splined headshaft produce low-speed and high torque which provide superior ground penetration and low chain wear for better production results.



ELEVATING ROPM CAB. The elevating rollover protective module cab features LEXAN glass, filtered and pressurized air, heating and air-conditioning. The cab's vantage point allows a virtually unrestricted view of the boom, trench and conveyor.



VANTAGE TRACK. Relax in the confidence that your investment is protected and your entire closed-loop hydrostatic system is covered with either a 3-year/3000-hour or 5-year/5000-hour extended care service program.



TERRAIN LEVELER® SURFACE EXCAVATION MACHINE ATTACHMENT. The T1055 Commander® 3 has a chain drive Terrain Leveler SEM attachment option for large rock excavation applications including surface mining, overburden removal, site preparation and road demolition.



FULL FUNCTION REMOTE CONTROL. The T1055III is available with a wireless remote control that can provide full operator function remotely.

T1055III TRENCHER

GENERAL DIMENSIONS

Approach angle: 16°

Height: 11.3' (3.4 m)

Length range: 32.2' – 40.8' (9.8 m – 12.4 m)

Weight range (tractor plus trencher attachment): 105,000 lb – 124,000 lb (47,627.2 kg – 56,245.5 kg)

Width range: 9.7' – 10.2' (2.9 m – 3.1 m)

ENGINE OPTION ONE

Make and model: Caterpillar C13 ACERT

Gross horsepower: 415 hp (310 kW)

Engine rpm: 2100

Fuel consumption @ full load: 20.9 gph (79.1 L/hr)

EPA certification family: Tier 3

ENGINE OPTION TWO

Make and model: Caterpillar C13 ACERT

Gross horsepower: 415 hp (310 kW)

Engine rpm: 2100

Fuel consumption @ full load: 21.3 gph (80.6 L/hr)

EPA certification family: Tier 4 Final (Stage IV)

TRACKS

Ground pressure: 9.4 psi – 13.9 psi (64.8 kPa – 95.8 kPa)

Tilt track with Auto Level available: No

Track length: 14.7' (4.5 m)

Track pad type: Single or double grouser

Track pad width: 24" or 30" (61 cm or 76.2)

Track size: D7G

Travel speed max: 114 fpm (34.7 m/min)

Service brakes: Hydrostatic

CONVEYOR

Belt width: 30" (76.2 cm)

Max conveyor belt speed: 1070 fpm (326.1 m/min)

Conveyor belt style: Cleated or finger-type

Conveyor length: 9' or 14' (2.7 m or 4.3 m)

Conveyor shift available: Yes

Conveyor shift distance: 5" or 65" (12.7 cm or 165.1 cm)

Conveyor style: Curved

Discharge direction: Right or left

CAB

Air conditioner/heater: Yes

Air suspension seat: No

AM/FM stereo with weather band: Yes

Elevating: Yes

Pressurized/filtered air: Yes

Rollover protective module (ROPM): Yes

Level II FOPS: Yes

TRENCHER ATTACHMENT

Boom depth options: 6', 8', 10', 12' or 14' (1.8 m, 2.4 m, 3 m, 3.7 m or 4.3 m)

Boom top rollers: Yes

Chain speed range: 316 fpm – 714 fpm (96.3 m/min – 217.6 m/min)

Cutting width range: 28" – 42" (71.1 cm – 106.7 cm)

End idler diameter: 40" or 50" (101.6 cm or 127 cm)

CHAIN DRIVE TERRAIN LEVELER ATTACHMENT

Weight (tractor plus attachment): 128,000 lb (58,059.8 kg)

Max cutting depth: 32" (81.3 cm)

Cutting width: 132" (335.3 cm)

Drum tilt available: No

Max drum speed rpm: 42

Laser and GPS acceptable: Yes

Digging chain size: 4501

OPTIONS

Loadout conveyor

Terrain leveler attachment

Remote control

Vermeer Corporation reserves the right to make changes in engineering, design and specifications; add improvements; or discontinue manufacturing at any time without notice or obligation. Equipment shown is for illustrative purposes only and may display optional accessories or components. Please contact your local Vermeer dealer for more information on machine specifications. Vermeer, the Vermeer logo, Equipped to Do More, Commander, TEC and Terrain Leveler are trademarks of Vermeer Manufacturing Company in the U.S. and/or other countries. Caterpillar is a trademark of Caterpillar Inc. Lexan is a trademark of Sabic Innovative Plastics IP BV. © 2016 Vermeer Corporation. All Rights Reserved. Printed in the U.S.A. Please recycle.

